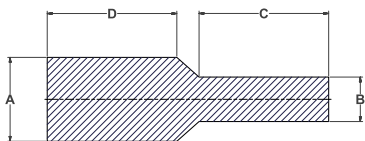


MASKING PLUGS

ULTRABAKE™ PULL PLUGS 600°F (315°C) - SPP E.P.D.M. PULL PLUGS 350°F (177°C) - PP



- PP Recommended for Painting and Anodizing
- SPP Recommended for Powder Coating, E-Coating, Plating and Anodizing
- Plug threaded or non-threaded through holes
- Reusable



- Ultrabake™ Pull Plugs are color coded to increase visibility and to ease the job of sorting plugs after use

Part Number	SPP Color	PP Black	Hole Fit	Imperial (in)				Quantity Per Bag
				A	B	C	D	
SPP06	CLEAR	PP06	1/20	0.062 1.57	0.046 1.17	0.337 8.56	0.375 9.53	500
SPP07	PINK	PP07	1/16	0.067 1.70	0.047 1.19	0.610 15.49	0.625 15.88	500
SPP08	LIGHT GREEN	PP08	1/16	0.073 1.85	0.046 1.17	0.590 14.99	0.612 15.54	500
SPP09	YELLOW	PP09	5/64	0.091 2.31	0.052 1.32	0.625 15.88	0.625 15.88	500
SPP10	GREY	PP10	5/64	0.093 2.36	0.050 1.27	0.700 17.78	0.700 17.78	500
SPP11	LIGHT BLUE	PP11	3/32	0.104 2.64	0.062 1.57	0.625 15.88	0.525 13.34	500
SPP11A	WHITE	PP11A	7/64	0.125 3.18	0.062 1.57	0.625 15.88	0.625 15.88	500
SPP14	CLEAR	PP14	1/8	0.130 3.30	0.093 2.36	1.000 25.40	1.000 25.40	500
SPP15	PINK	PP15	1/8	0.130 3.30	0.093 2.36	0.700 17.78	0.650 16.51	500
SPP17	LIGHT GREEN	PP17	1/8	0.142 3.61	0.085 2.16	0.558 14.17	0.625 15.88	500
SPP18	YELLOW	PP18	9/64	0.154 3.91	0.083 2.11	0.625 15.88	0.632 16.05	500
SPP20	GREY	PP20	9/64	0.156 3.96	0.062 1.57	0.750 19.05	0.625 15.88	500
SPP22	LIGHT BLUE	PP22	5/32	0.162 4.11	0.096 2.44	0.581 14.76	0.625 15.88	500
SPP23	WHITE	PP23	11/64	0.195 4.95	0.110 2.79	0.625 15.88	0.625 15.88	500
SPP30	CLEAR	PP30	3/16	0.218 5.54	0.130 3.30	1.000 25.40	1.000 25.40	500
SPP33	PINK	PP33	7/32	0.225 5.72	0.125 3.18	1.000 25.40	1.000 25.40	500
SPP37	LIGHT GREEN	PP37	1/4	0.257 6.53	0.130 3.30	1.000 25.40	1.000 25.40	500
SPP40	YELLOW	PP40	17/64	0.275 6.99	0.125 3.18	0.920 23.37	0.937 23.80	500
SPP40LS	WHITE	PP40LS	17/64	0.275 6.99	0.146 3.71	2.000 50.80	2.000 50.80	500
SPP42	GREY	PP42	19/64	0.316 8.03	0.152 3.86	0.910 23.11	1.000 25.40	500
SPP42A	LIGHT BLUE	PP42A	5/16	0.333 8.46	0.251 6.38	1.100 27.94	0.757 19.23	500
SPP43	WHITE	PP43	5/16	0.335 8.51	0.153 3.89	1.000 25.40	1.000 25.40	500
SPP50	CLEAR	PP50	11/32	0.350 8.89	0.193 4.90	0.925 23.50	0.881 22.38	500
SPP55	PINK	PP55	3/8	0.384 9.75	0.154 3.91	1.000 25.40	1.000 25.40	250

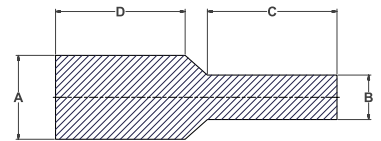
ULTRABAKE™ PULL PLUGS 600°F (315°C) - SPP

E.P.D.M. PULL PLUGS 350°F (177°C) - PP

Part Number	SPP Color	PP Black	Hole Fit	Imperial (in)				Quantity Per Bag
				A	B	C	D	
SPP55LS	DARK BLUE	PP55LS	3/8	0.384	0.204	2.000	2.000	250
				9.75	5.18	50.80	50.80	
SPP60	LIGHT GREEN	PP60	13/32	0.408	0.191	1.000	1.009	250
				10.36	4.85	25.40	25.63	
SPP66	YELLOW	PP66	7/16	0.444	0.255	0.990	1.000	250
				11.28	6.48	25.15	25.40	
SPP67	GREY	PP67	7/16	0.445	0.255	1.000	1.000	250
				11.30	6.48	25.40	25.40	
SPP70	LIGHT BLUE	PP70	29/64	0.472	0.243	1.000	1.000	250
				11.99	6.17	25.40	25.40	
SPP73	WHITE	PP73	15/32	0.496	0.250	1.000	1.000	250
				12.60	6.35	25.40	25.40	
SPP73LS	LIGHT GREEN	PP73LS	15/32	0.496	0.263	2.000	2.000	250
				12.60	6.68	50.80	50.80	
SPP77	CLEAR	PP77	1/2	0.510	0.256	0.956	1.000	250
				12.95	6.50	24.28	25.40	
SPP80	PINK	PP80	33/64	0.530	0.250	1.000	1.000	250
				13.46	6.35	25.40	25.40	
SPP85	LIGHT GREEN	PP85	37/64	0.571	0.303	1.000	1.000	250
				14.50	7.70	25.43	25.40	
SPP89	YELLOW	PP89	19/32	0.612	0.250	1.000	1.000	250
				15.54	6.35	25.40	25.40	
SPP89LS	CLEAR	PP89LS	19/32	0.612	0.325	2.000	2.000	250
				15.54	8.26	50.80	50.80	
SPP90	GREY	PP90	5/8	0.640	0.375	1.000	1.000	100
				16.26	9.53	25.40	25.40	
SPP95	LIGHT BLUE	PP95	13/16	0.707	0.375	1.326	1.250	100
				17.96	9.53	33.68	31.75	
SPP95LS	DARK GREEN	PP95LS	13/16	0.707	0.375	2.000	2.000	100
				17.96	9.53	50.80	50.80	
SPP97	WHITE	PP97	23/32	0.728	0.375	1.100	1.125	100
				18.49	9.53	27.94	28.58	
SPP100	CLEAR	PP100	3/4	0.770	0.375	0.927	1.000	100
				19.56	9.53	23.55	25.40	
SPP100LS	YELLOW	PP100LS	3/4	0.770	0.408	2.000	2.000	100
				19.56	10.36	50.80	50.80	
SPP105	PINK	PP105	25/32	0.807	0.428	1.250	1.250	100
				20.50	10.87	31.75	31.75	
SPP110	LIGHT GREEN	PP110	7/8	0.888	0.372	1.000	1.000	100
				22.56	9.45	25.40	25.40	
SPP120	YELLOW	PP120	1	1.020	0.375	0.970	1.000	100
				25.91	9.53	24.64	25.40	
SPP140	GREY	PP140	1-3/8	1.380	0.732	1.500	1.500	50
				35.05	18.59	38.10	38.10	



- PP Recommended for Painting and Anodizing
- SPP Recommended for Powder Coating, E-Coating, Plating and Anodizing
- Plug threaded or non-threaded through holes
- Reusable



- Ultrabake™ Pull Plugs are color coded to increase visibility and to ease the job of sorting plugs after use